



New Flowable Composite Resin





Features

1. Good Handling
2. Excellent color matching





Features

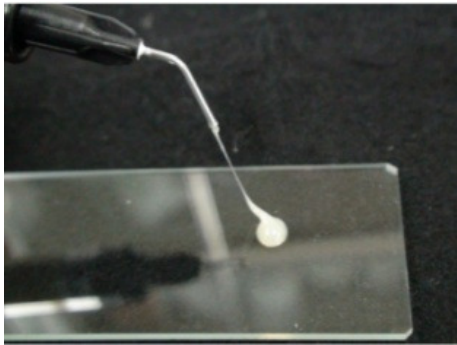
1. Good Handling
2. Excellent color matching



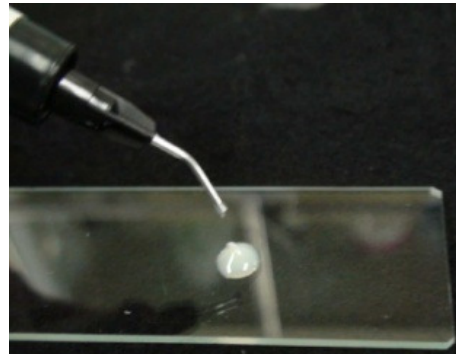


Good handling

☆ Not Sticky



Estelite Flow Quick



New Flow Quick

☆ Easy extrusion

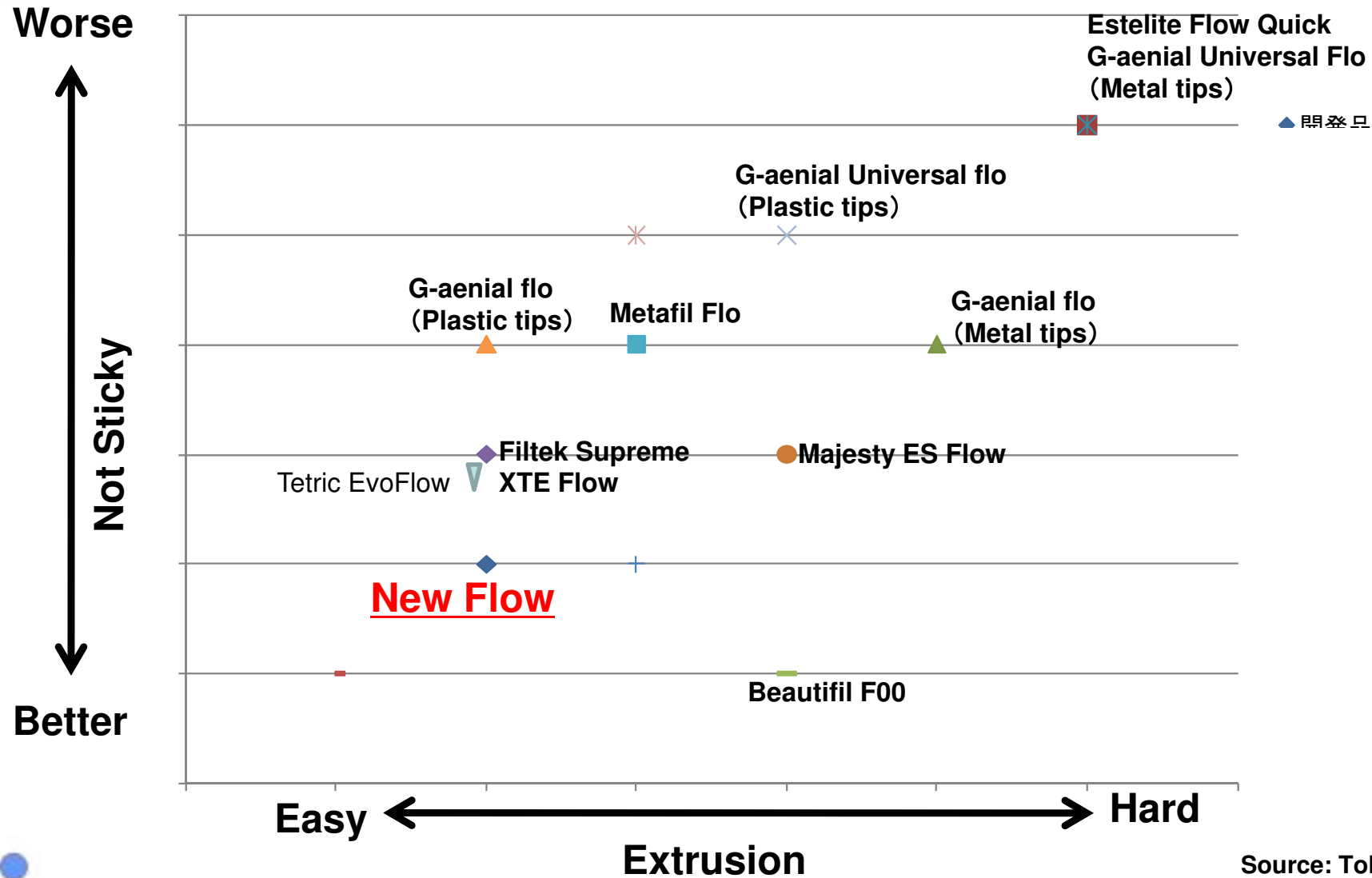


- ✓ Adoption of new composite filler (improving the paste rheology)
- ✓ O-ring improvement of syringe pusher(Suck back)



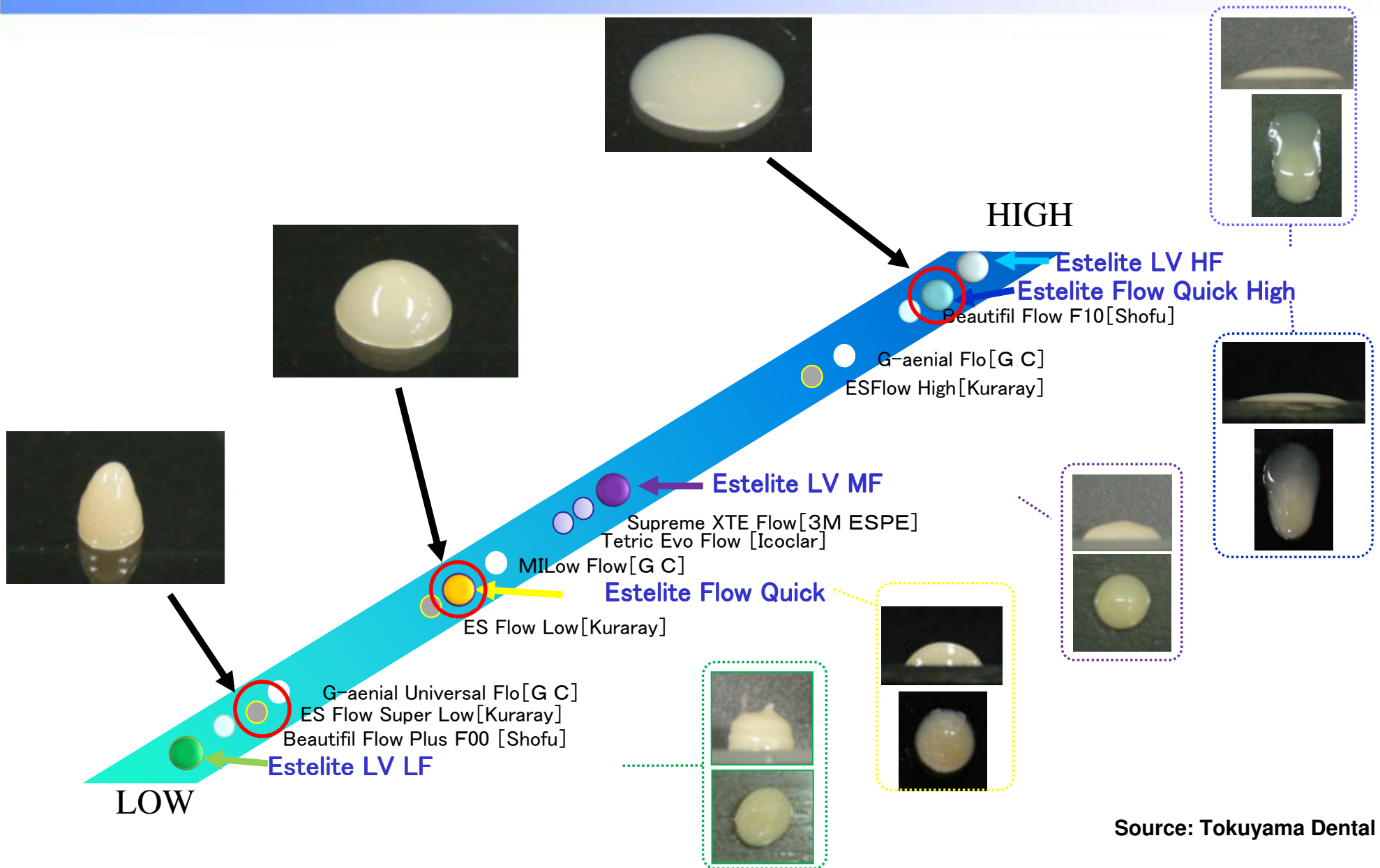


Comparison with other products





Flowability comparison





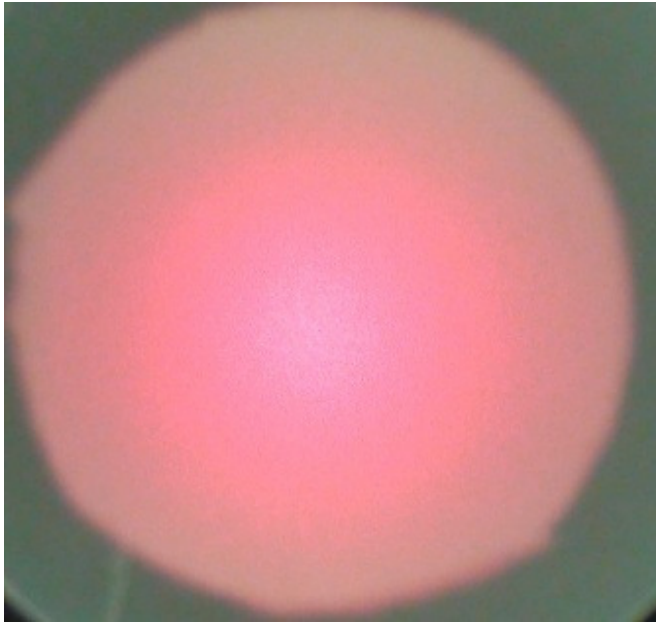
Features

- 1 . Good Handling
- 2 . Excellent color matching

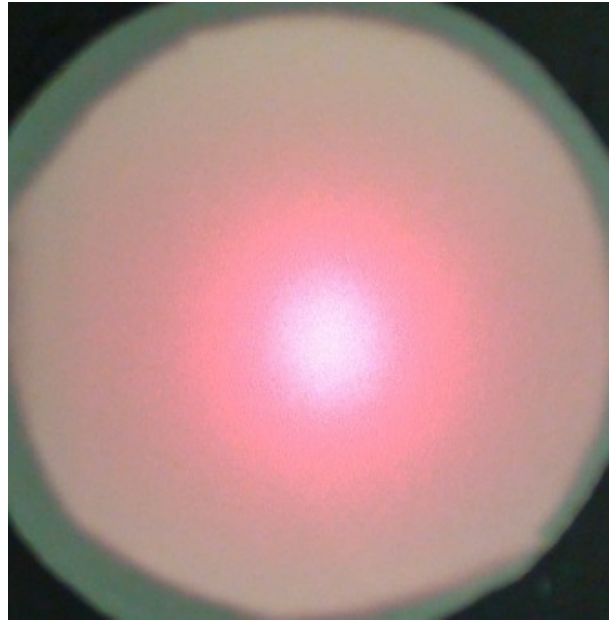




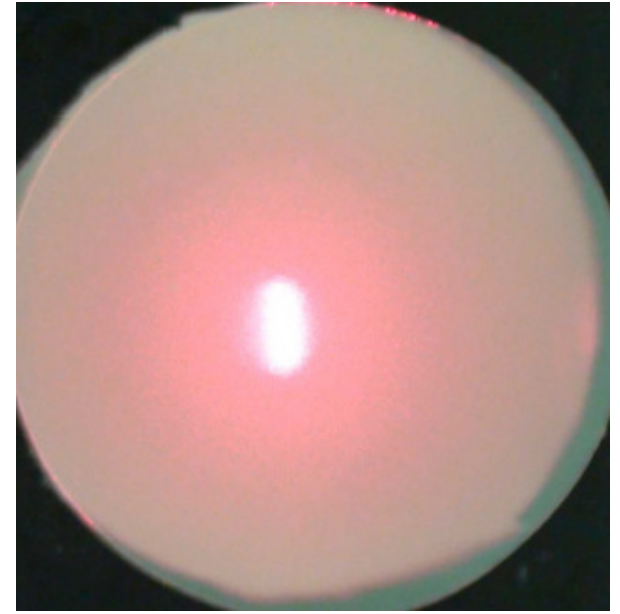
High Light Diffusion



New FQ
Light diffusion: 45%



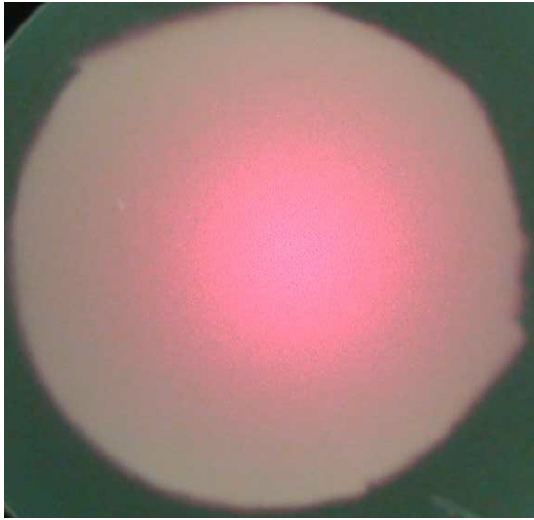
EΣQ
Light diffusion : 25%



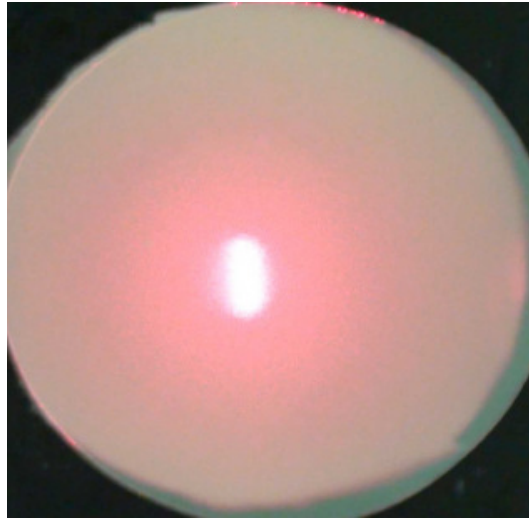
EFQ
Light diffusion : 2%

(Asteria Body shade = 45%)

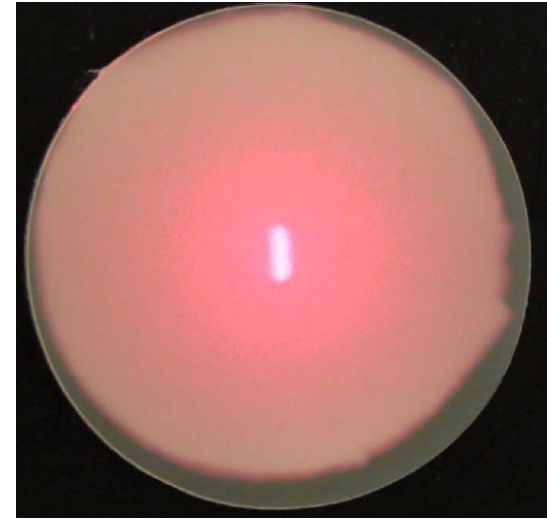




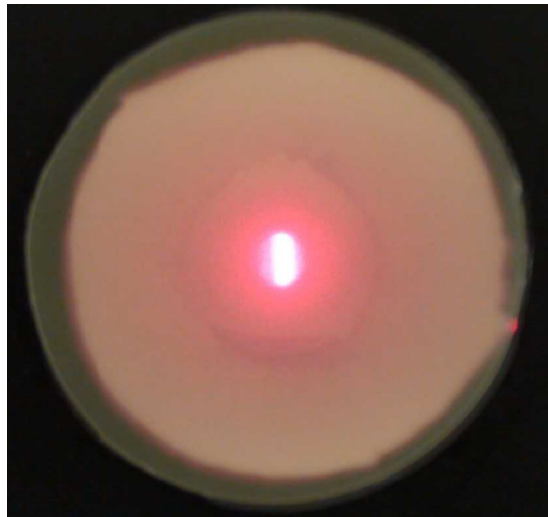
New Flow
Light diffusion: 45%



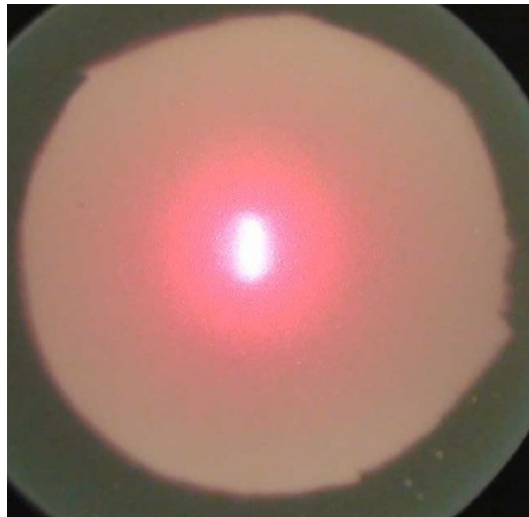
EFQ
Light diffusion: 2%



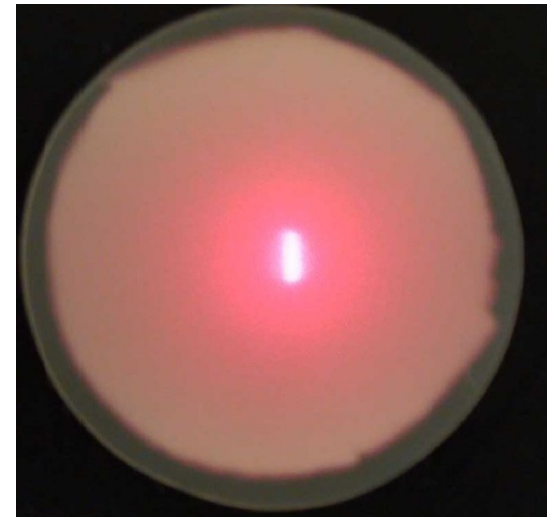
ES Flow /Kuraray
Light diffusion: 13%



G-aenial Flo / GC
Light diffusion: 1%



Supreme XTE flow / 3M
Light diffusion: 2%




Beautifil F00 / Shofu
Light diffusion: 6%

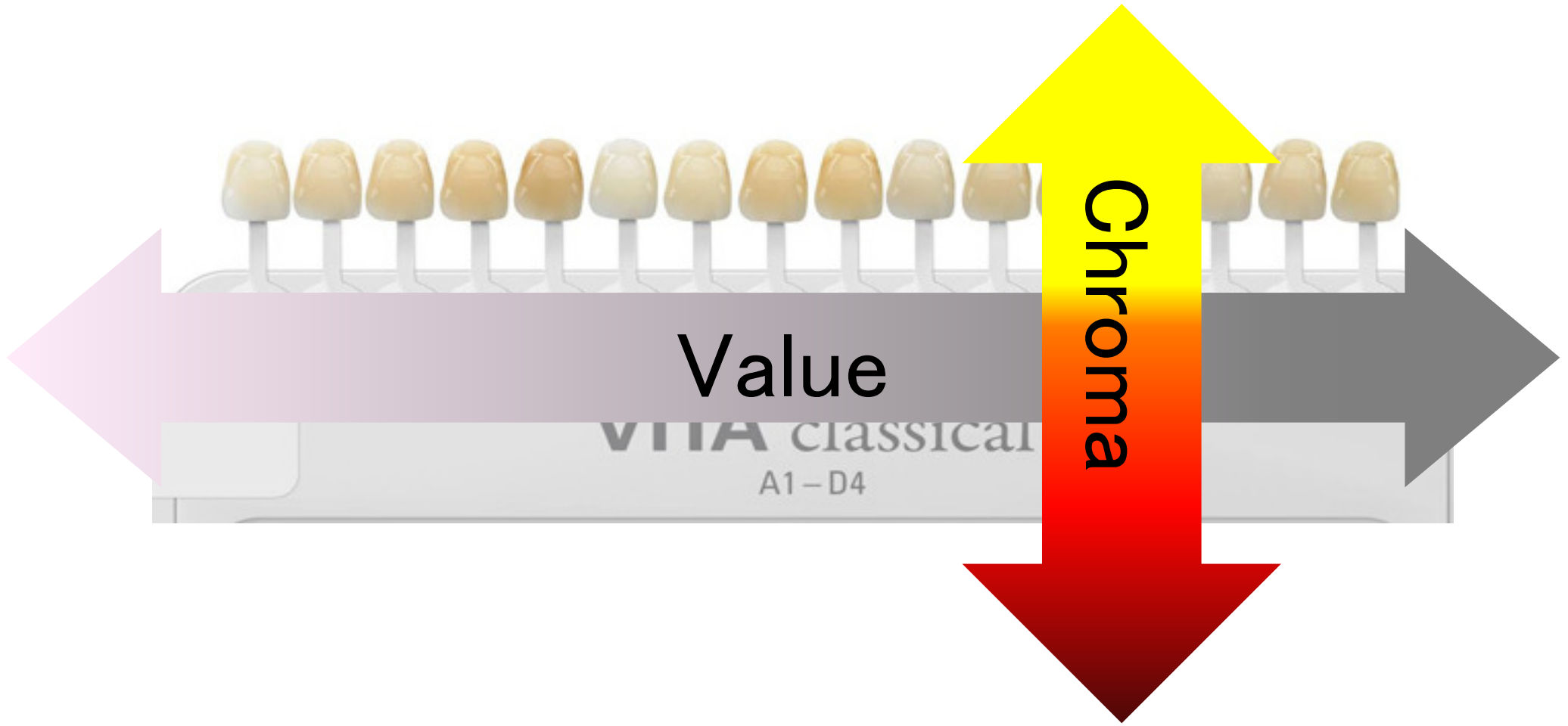


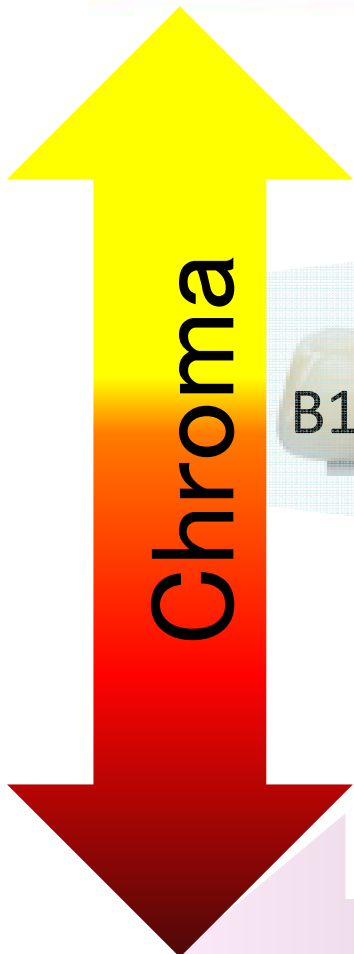
Shade line-up

- The shades were reduced due to the improved Chameleon effect.
- Close to VITA shade (Different with EFQ)

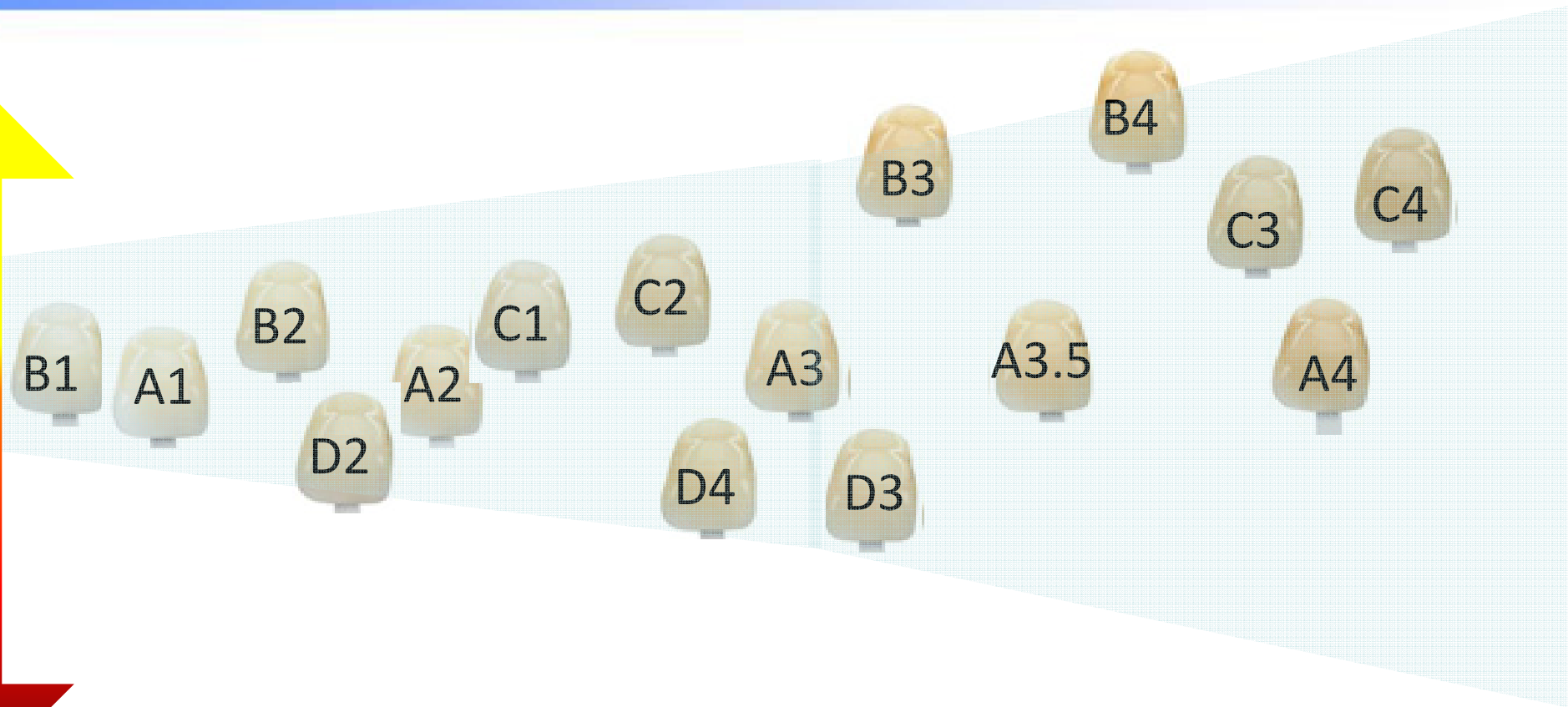
		
High	Medium	Super Low
7 Shades	12 Shades	6 Shades
	CE	
A1, A2, A3, A3.5	A1, A2, A3, A3.5, A4, A5, B3	A1, A2, A3, A3.5, A4, A5
OPA2, OPA3, OPA4	OPA2, OPA3, OPA4 BW	



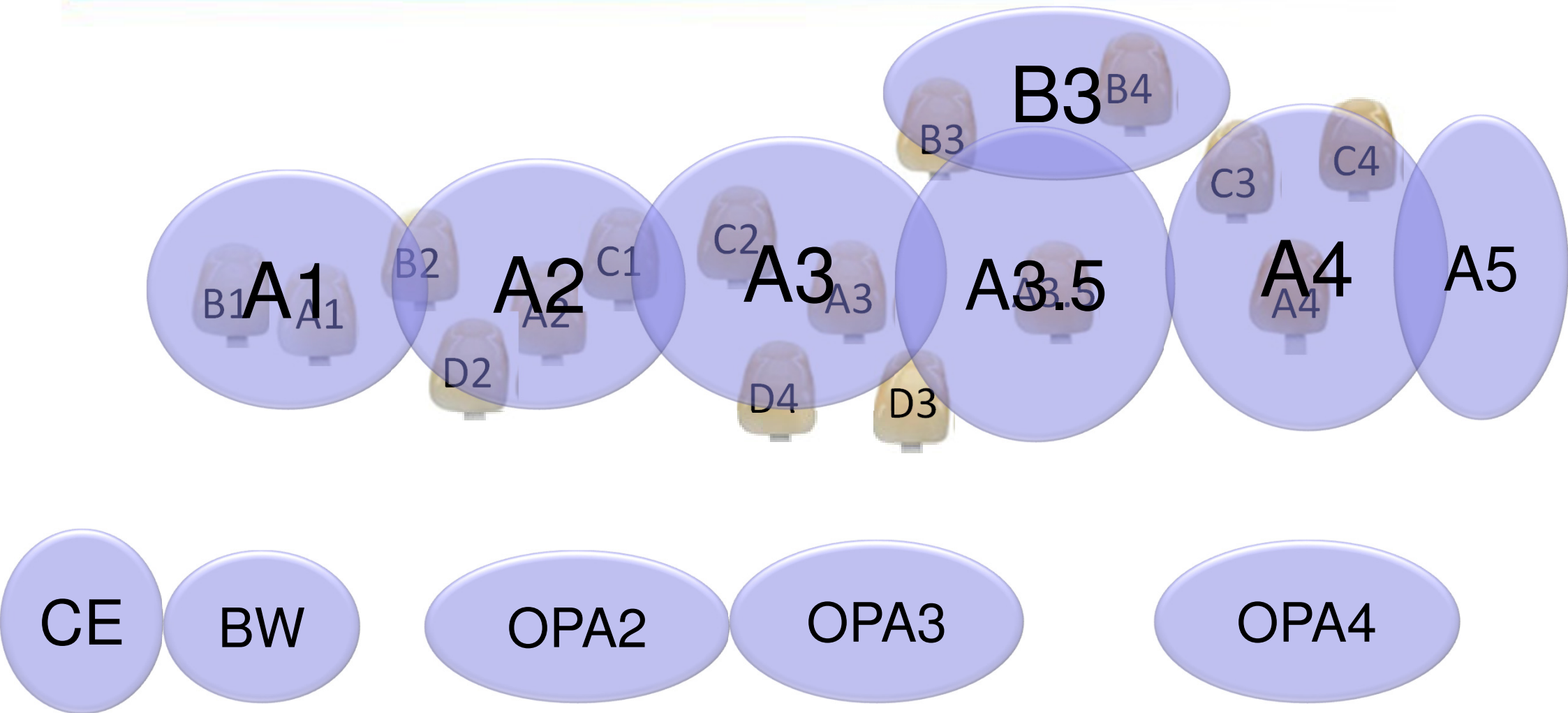
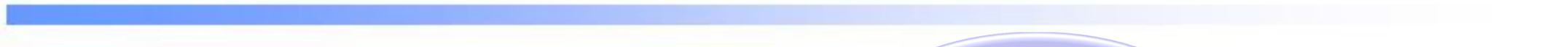




Chroma



Value





Physical properties





Color change before and after curing



Σ Quick
 $\Delta Y_b/Y_w \approx 0.01$
 $\Delta E^* \approx 1.6$



Flow Quick
 $\Delta Y_b/Y_w \approx -0.02$
 $\Delta E^* \approx 4.9$



New flow
 $\Delta Y_b/Y_w \approx -0.020$
 $\Delta E^* \approx 4.2$

Transparency change ($\Delta Y_b/Y_w$) before and after curing

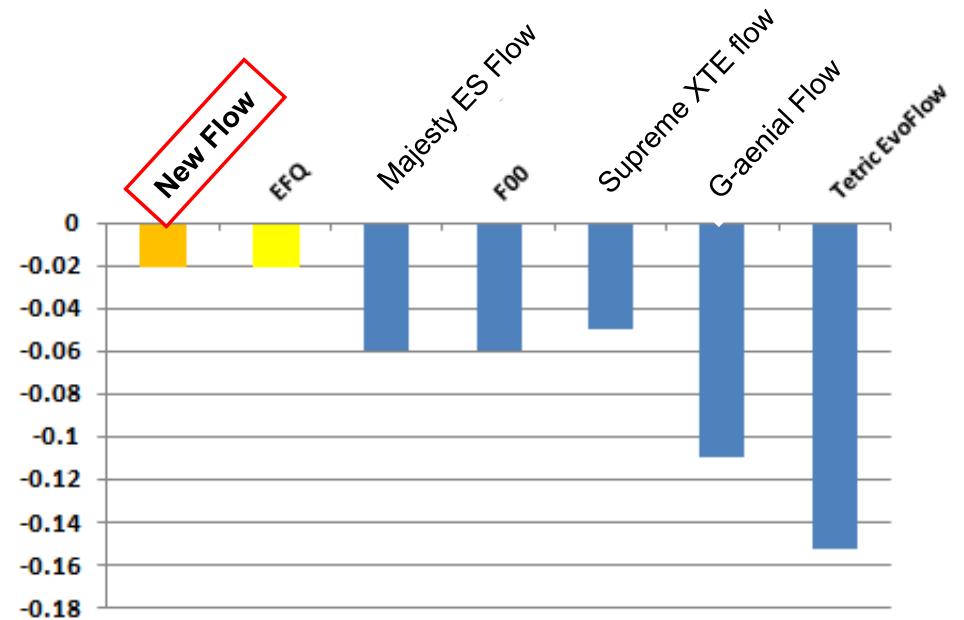
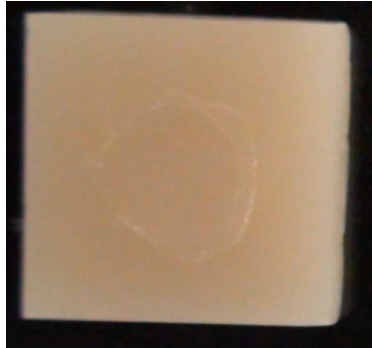


Fig. Comparison with in-line products

Comparable with EFQ



Color change before and after curing



Σ Quick
 $\Delta Y_b/Y_w \approx 0.01$
 $\Delta E^* \approx 1.6$



Flow Quick
 $\Delta Y_b/Y_w \approx -0.02$
 $\Delta E^* \approx 4.9$



Prototype
 $\Delta Y_b/Y_w \approx -0.020$
 $\Delta E^* \approx 4.2$

Color change (ΔE^*) before and after curing

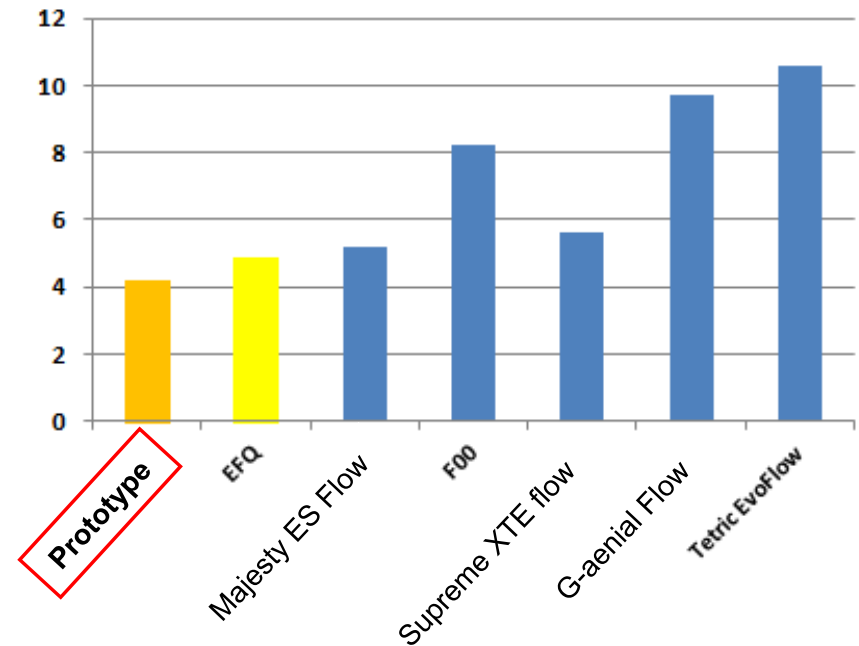


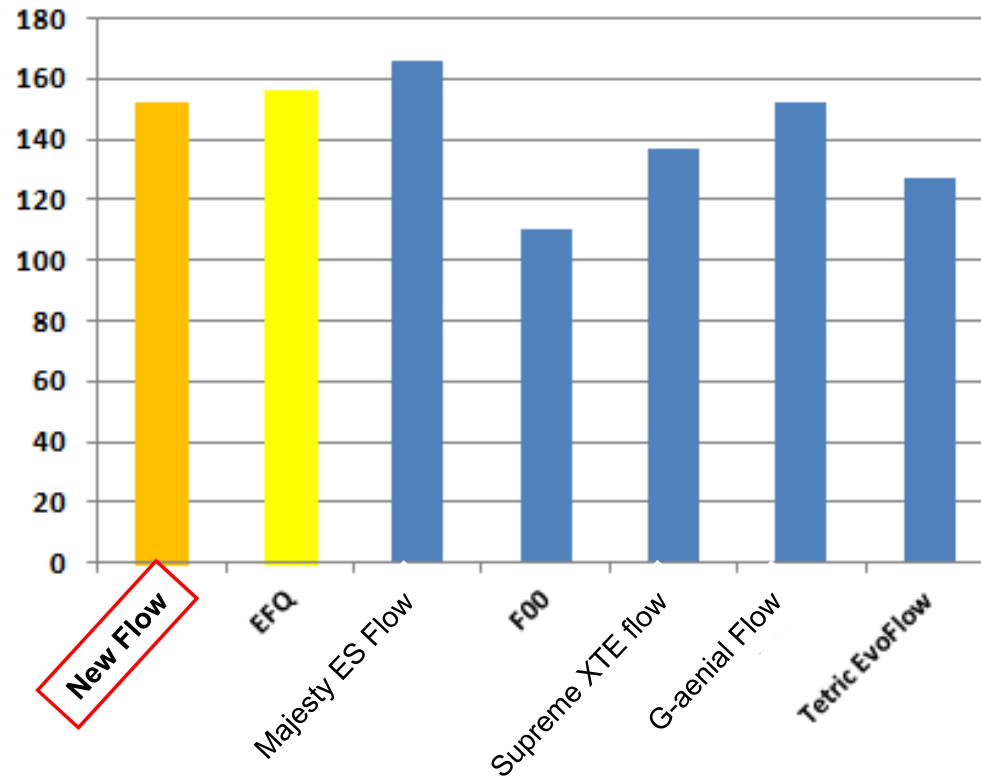
Fig. Comparison with in-line products

Comparable with EFQ



Curing property

Flexural Strength (MPa)



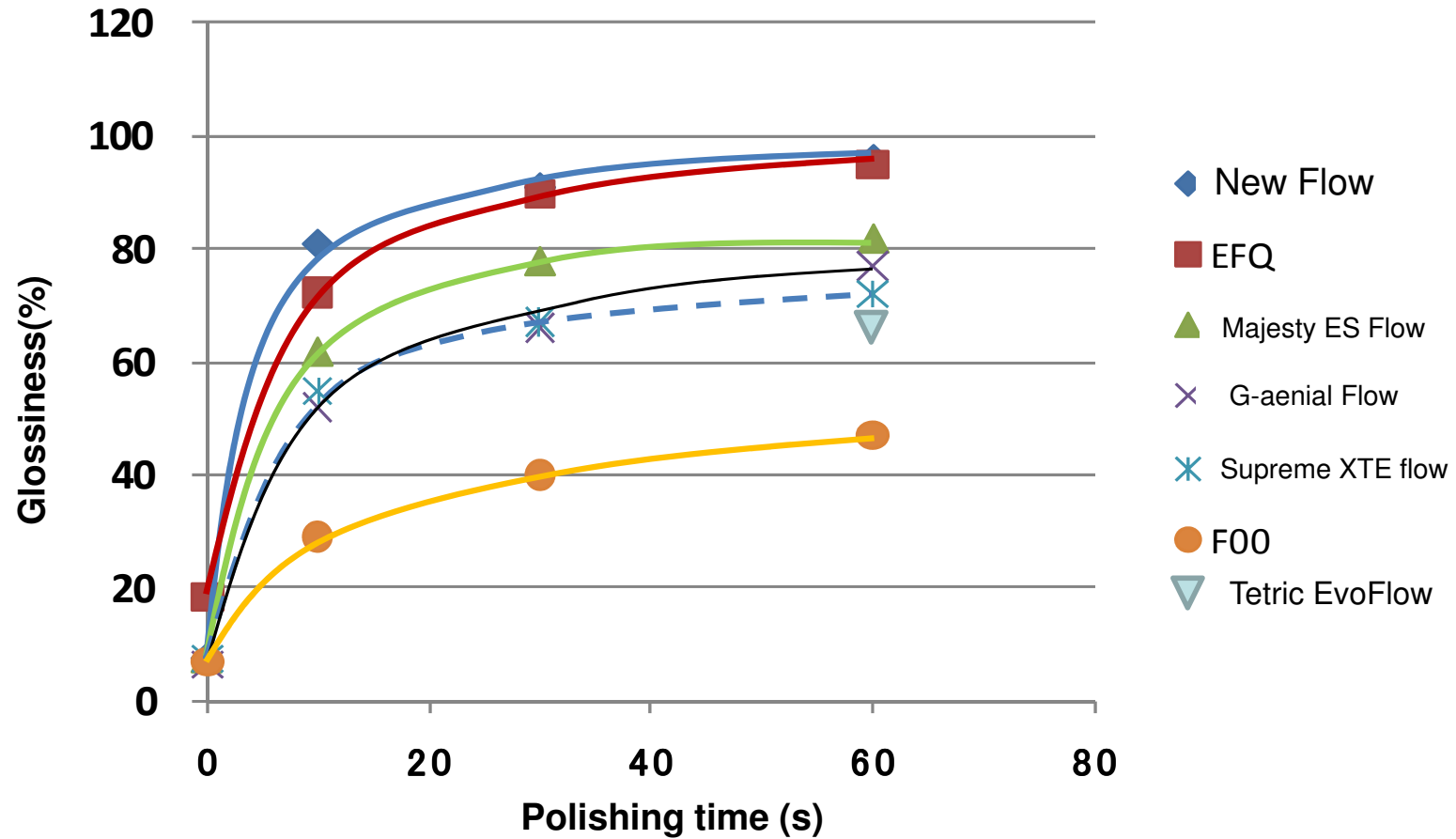
Optilux LCT, 800 mW/cm²



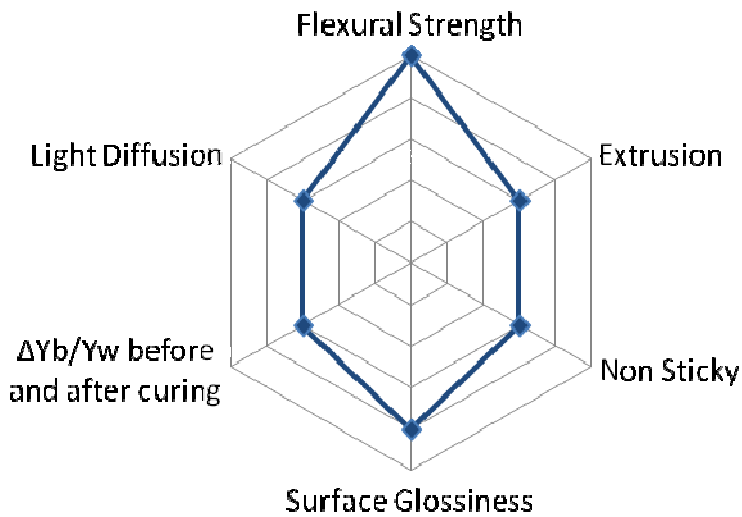
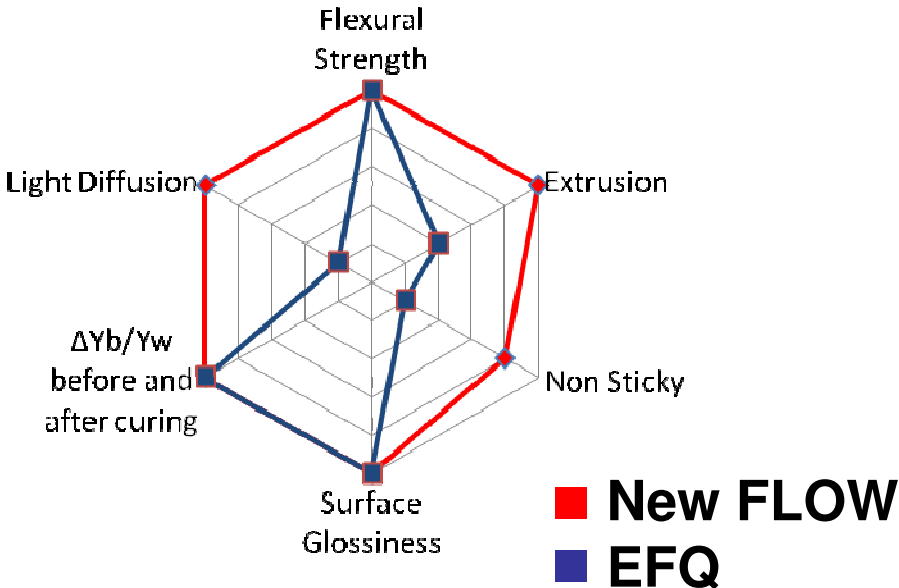


Polishability

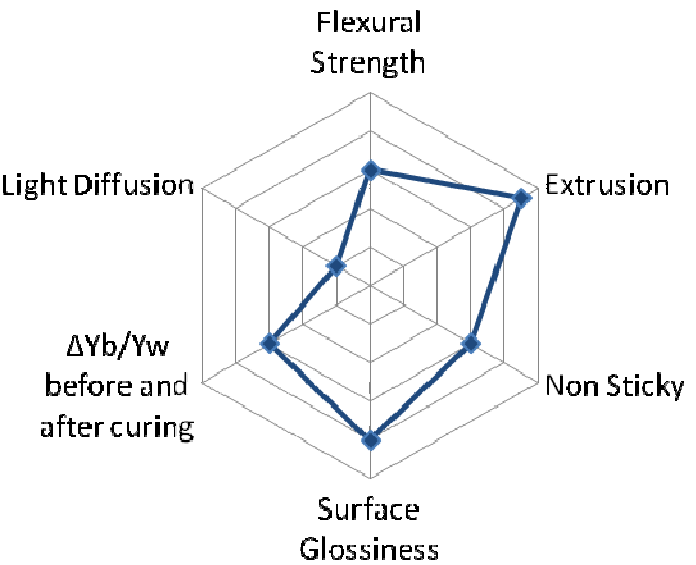
Surface Glossiness



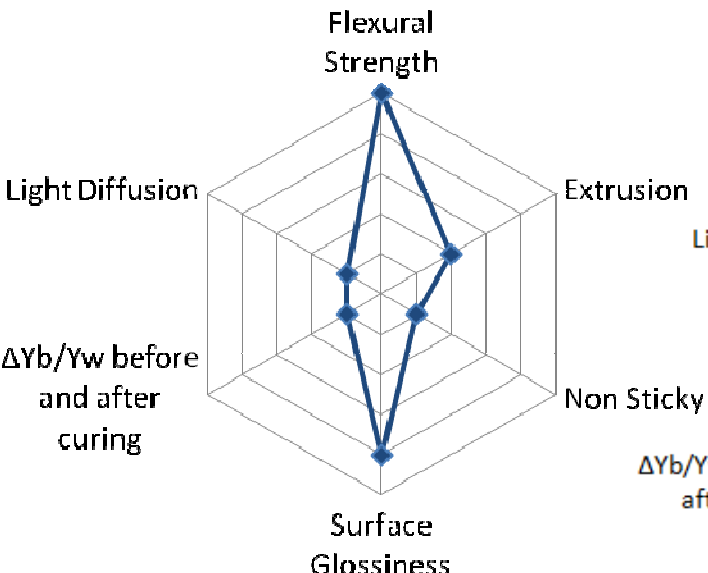
Comparison with other products



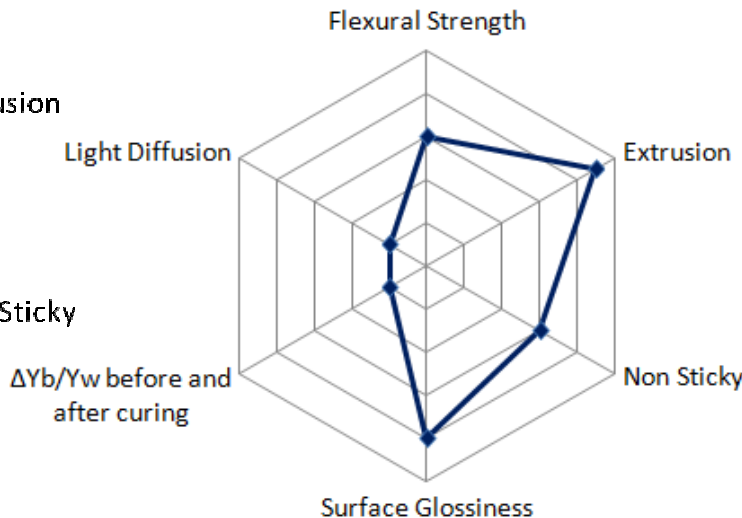
Majesty ES Flow



Supreme XTE flow

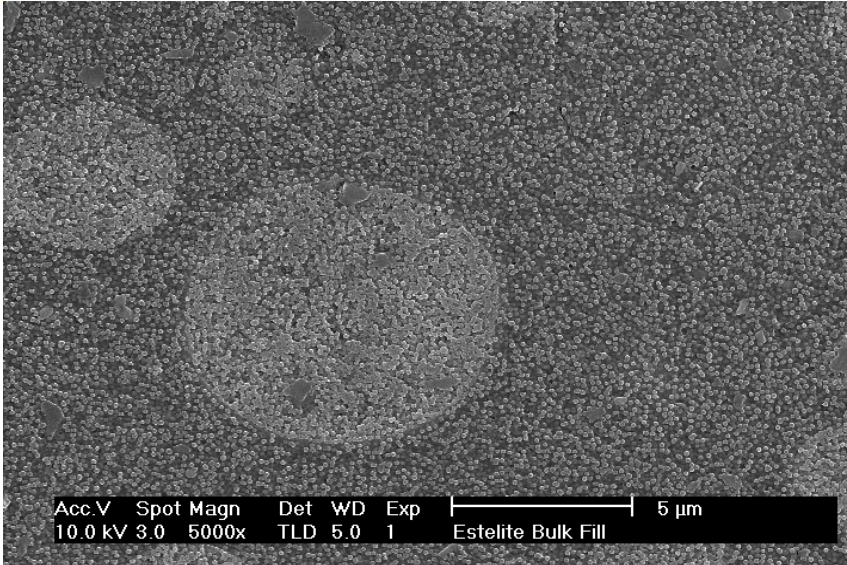


G-aenial Flow



Tetric EvoFlow

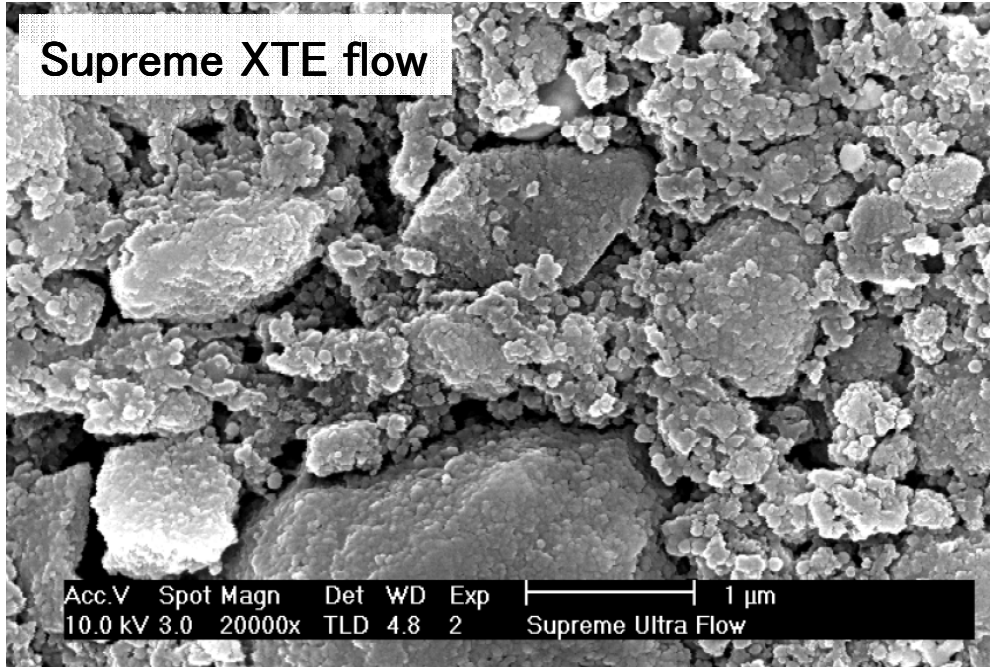
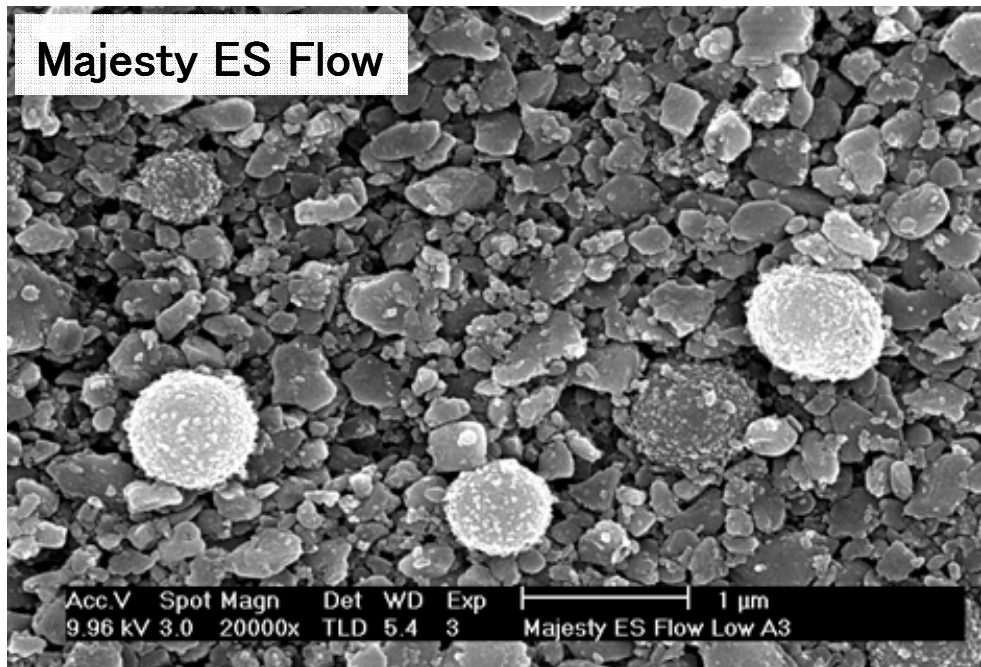
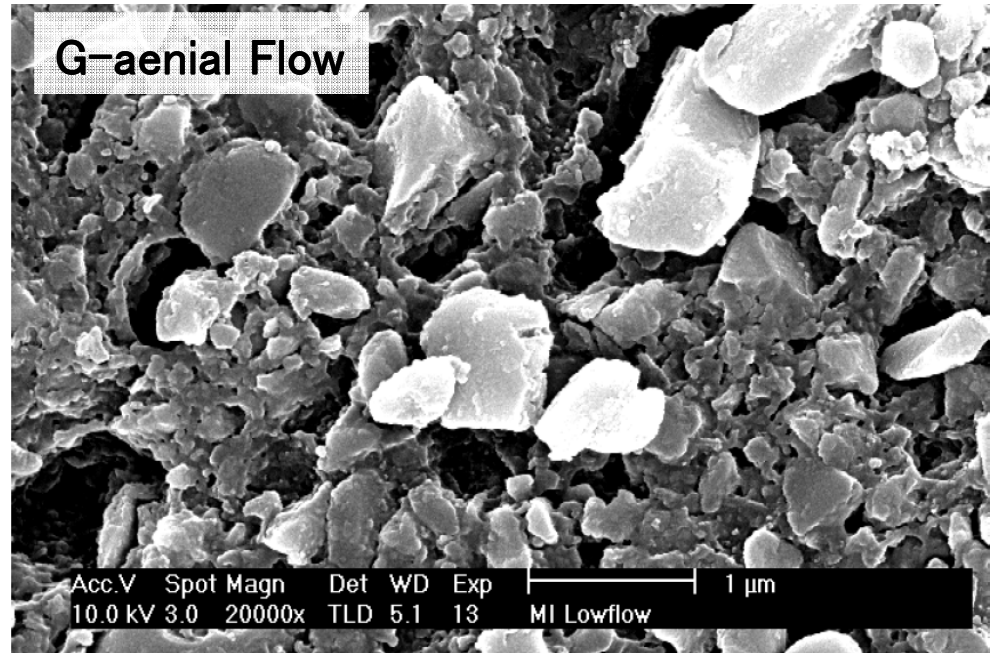
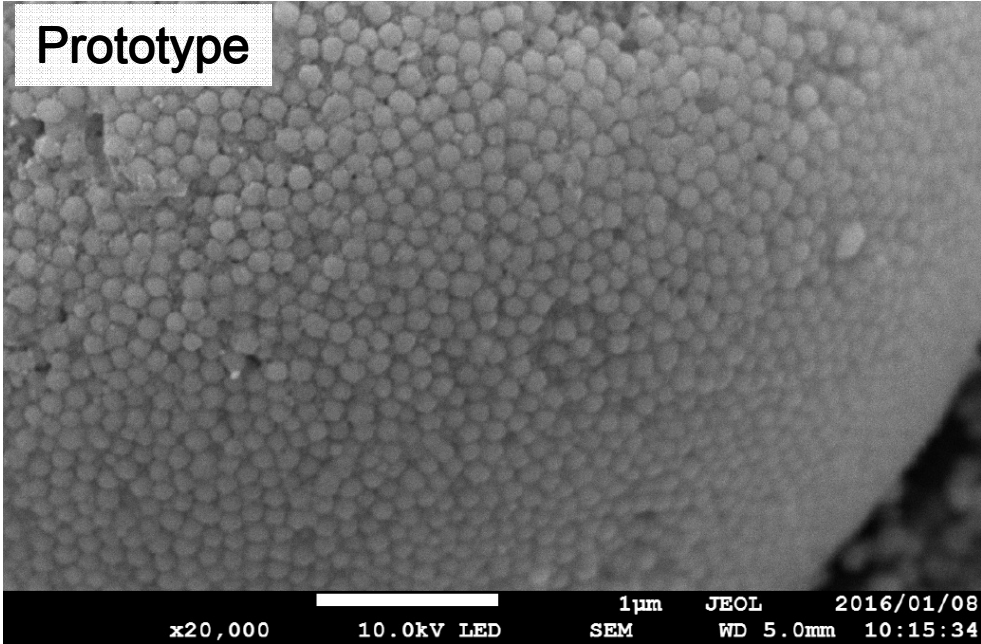
※Evaluated with the attached metal tips



Advantageous effect by adopting the new composite filler

- ✓To improve the Handling (Stickiness control)
- ✓To impart the light diffusion
- ✓To maintain the polishability







Launching target

- To be launched September, 2017

